

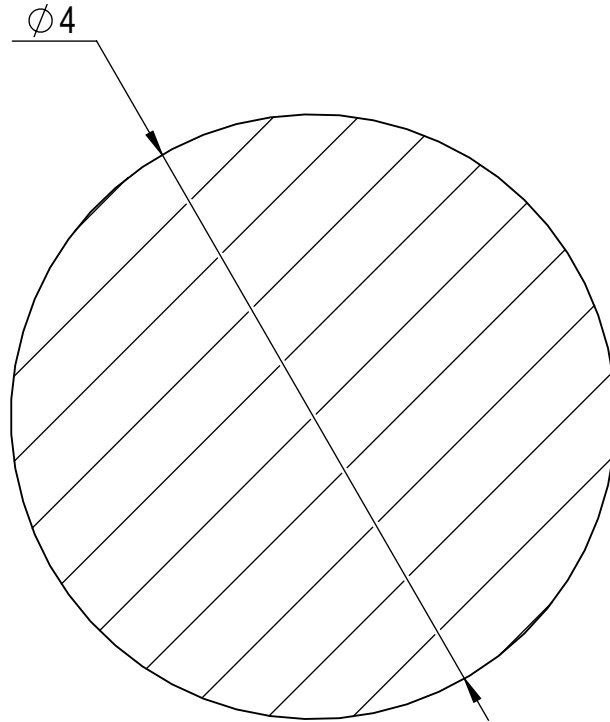
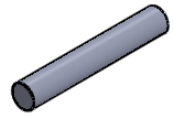
**Compashield® splice quality requirements:**

No reduction of the shielding properties in the splicing area. Splicing rubber thin and conductive.  
No flash, porosity or excess rubber at the joint after splicing.  
Max increase of compression force in the splicing area 5%. No excess splicing rubber inside hollow profiles.  
Joining point should stand for 10% stretch without mechanical damage

<b>Cross-section area</b>
12,57 mm <sup>2</sup>

**Electrial resistance measure:**

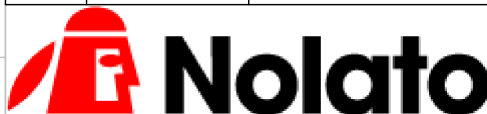
Methode: Nolato R3 Max: 300



Nolato Silikonteknik

Art.nr	Material	Length	Weight/m	Splice
1246800	8642	Roll	30,16	No

REVISIONS		
REV.	DATE	DESCRIPTION



Document name  
**Compashield Solid O**

	Sheet scale <b>20:1</b>	Sheet size <b>A4</b>	Document no. <b>P2468-15-001</b>	Rev no. <b>A</b>	Nolato art. no. <b>1246800</b>
--	----------------------------	-------------------------	-------------------------------------	---------------------	-----------------------------------

General tolerances	Drawn by <b>K.M</b>	Checked by <b>O.E</b>	Date <b>2015-07-09</b>
--------------------	------------------------	--------------------------	---------------------------

Reference cad data  
**Compashield Solid O**