

Compashield® splice quality requirements:

No reduction of the shielding properties in the splicing area. Splicing rubber thin and conductive.

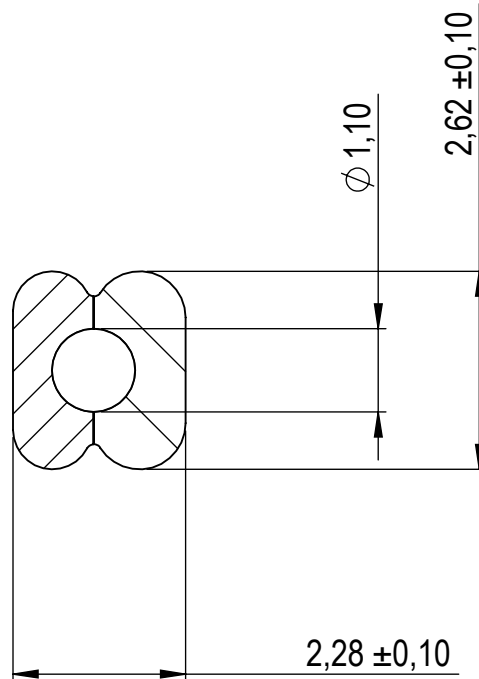
No flash, porosity or excess rubber at the joint after splicing.

Max increase of compression force in the splicing area 5%. No excess splicing rubber inside hollow profiles.

Joining point should stand for 10% stretch without mechanical damage

Electrial resistance measure:

Methode: Nolato R3 Max: 300 mOhm



Art.nr	Material	Length	Weight/m	Splice
1237400	1540/8648	Roll	3 g/ 5 g	No
1237401		1087,5 ±5 mm		Yes
1237402		397 ±2 mm		Yes
1237403		386 ±2 mm		Yes
1237404		1535 ±5 mm		Yes
1237405		1179 ±5 mm		Yes
1237406		207 ±2 mm		Yes

REVISIONS

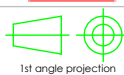
REV.	DATE	DESCRIPTION



Nolato

Document name

Compashield EE-gasket



1st angle projection

Sheet scale

10:1

Sheet size

A4

Document no.

P2374:15:001

Rev no.

A

Nolato art. no.

1237400

General tolerances

ISO 3302-1 Class M3

Drawn by

S.Muhonen

Checked by

P.Åkerberg

Date

2015-02-17

Reference cad data

2374_Compashield EEgasket