

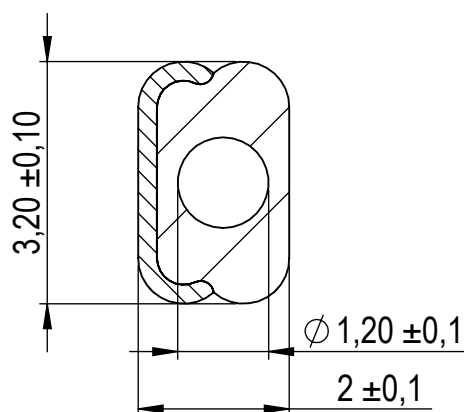
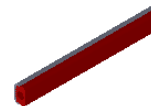
Compashield® splice quality requirements:

No reduction of the shielding properties in the splicing area. Splicing rubber thin and conductive.
 No flash, porosity or excess rubber at the joint after splicing.
 Max increase of compression force in the splicing area 5%. No excess splicing rubber inside hollow profiles.
 Joining point should stand for 10% stretch without mechanical damage

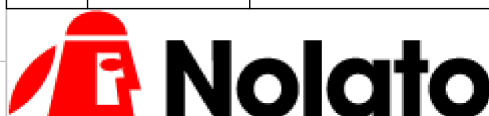
Cross-section area

4.88 mm²**Electrial resistance measure:**

Methode: Nolato R3 Max:300 mOhm

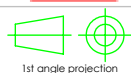


REVISIONS				
REV.	DATE	DESCRIPTION	Art.nr	Material
			1233900	8648/1540
			1233901	571,5 ± 3 mm
			1233902	530 ± 3 mm
				Roll
				2,6g / 4,4g
				Splice
				No
				Yes
				Yes



Document name

Compashield EE



1st angle projection

Sheet scale

10:1

Sheet size

A4

Document no.

P2339:15:001

Rev no.

B

Nolato art. no.

1233900

General tolerances

SS ISO 3302-1 M3

Drawn by

O.Edholm

Checked by

J.Björkegren

Date

2015-01-27

Reference cad data

1233900 A CompaShield EE