

**Compashield® splice quality requirements:**

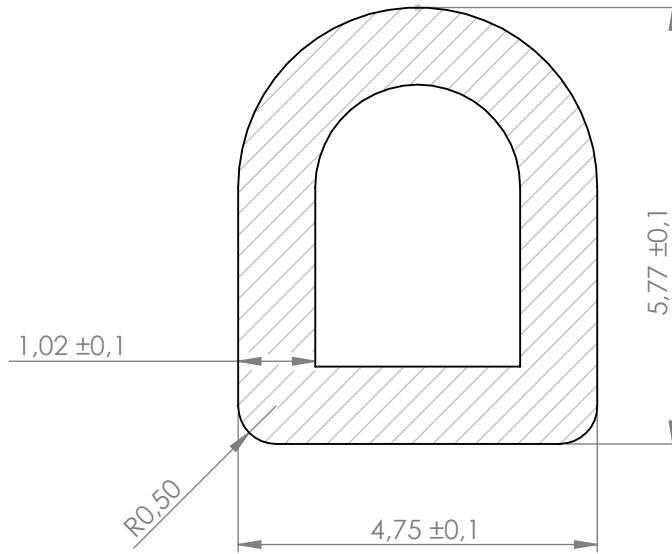
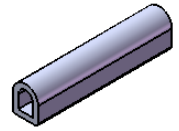
No reduction of the shielding properties in the splicing area. Splicing rubber thin and conductive.  
No flash, porosity or excess rubber at the joint after splicing.  
Max increase of compression force in the splicing area 5%. No excess splicing rubber inside hollow profiles.  
Joining point should stand for 10% stretch without mechanical damage

**Cross-section area**

15,56mm<sup>2</sup>

**Electrial resistance measure:**

Methode: Nolato R3 Max:300 mOhm



REVISIONS			Art.nr	Material	Lenght	Weight/m	Splice
REV.	DATE	DESCRIPTION	1232200	8642	Roll	33g	No
A	141105	New article. Profile 1669 with material 8642. //PÅ					

		Document name <b>Compashield Hollow D-shape</b>					
	Sheet scale 10:1	Sheet size A4	Document no. P2322:14:001	Rev no. A	Nalato art. no. 1232200	Customer no.	
General tolerances  ISO 3302-1 M3			Drawn by P.Åkerberg		Checked by P.Brock		
			Reference cad data		Date 2014-11-05		
					Part version no.		