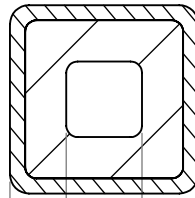
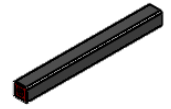


Compashield® splice quality requirements:

No reduction of the shielding properties in the splicing area. Splicing rubber thin and conductive.
 No flash, porosity or excess rubber at the joint after splicing.
 Max increase of compression force in the splicing area 5%. No excess splicing rubber inside hollow profiles.
 Joining point should stand for 10% stretch without mechanical damage

Cross-section area5.2 mm²**Electrial resistance measure:**

Method: Nolato R3 Max: 300 mOhm



□ 1 ±0,10

□ 2,49 ±0,10

Art.nr	Material	Length	Weight/m	Splice
1230300	8648/1540	Roll	4,5g / 3g	No
1230301		85,6 ± 1 mm		Yes
1230302		54,9 ± 1 mm		Yes
1230303		157,9 ± 1 mm		Yes
1230304		72,9 ± 1 mm		Yes
1230305		147,6 ± 2 mm		Yes
1230306		155,8 ± 2 mm		Yes
1230307		149,98 ± 1,42 mm		Yes
1230308		60,7 ± 1 mm		Yes
1230309		330,2 ± 2 mm		Yes

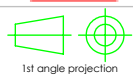
REVISIONS

REV.	DATE	DESCRIPTION



Document name

Compashield Soft Hollow Square



1st angle projection

Sheet scale
10:1Sheet size
A4Document no.
P2303:14:001Rev no.
DNalato art. no.
1232300

Customer no.

General tolerances

Drawn by
S.MuhonenChecked by
P.BrockDate
2014-10-07

ISO 3302-1 M3

Reference cad data

Part version no.