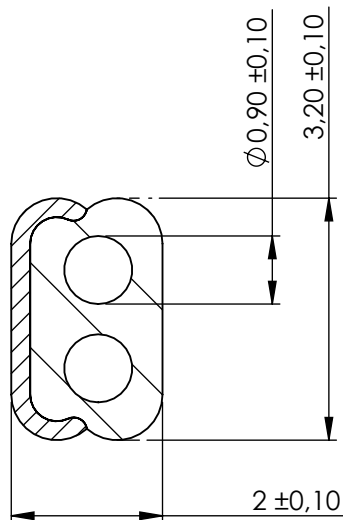


Compashield® splice quality requirements:

No reduction of the shielding properties in the splicing area. Splicing rubber thin and conductive.
 No flash, porosity or excess rubber at the joint after splicing.
 Max increase of compression force in the splicing area 5%. No excess splicing rubber inside hollow profiles.
 Joining point should stand for 10% stretch without mechanical damage


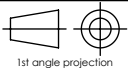
Cross-section area4.74 mm²**Electrial resistance measure:**

Method: Nolato R3 Max: 300 mOhm



| REVISIONS | | | | |
|-----------|------|-------------|---------|------------|
| REV. | DATE | DESCRIPTION | Art.nr | Material |
| | | | 1225800 | 8648 /1540 |
| | | | 1225801 | |
| | | | 1225802 | |

| Length | Weight/m | Splice |
|----------|-------------|--------|
| Roll | 2,6g / 4,4g | No |
| 570±2 mm | | Yes |
| 529±2 mm | | Yes |

| | | | | |
|---|---------------------|----------------------------|------------------------------|-----------------------|
|  | | Document name | | |
| | | Compashield EE-Gasket | | |
|  | Sheet scale 10:1 | Sheet size A4 | Document no. P2258:14:001 | Rev no. B |
| General tolerances | | Nalato art. no. 1225800 | | Customer no. |
| ISO 3302-1 M3 | | Drawn by S.Muhonen | | Checked by P.Brock |
| | | Reference cad data | | Date 2014-08-12 |
| | | Part version no. | | |