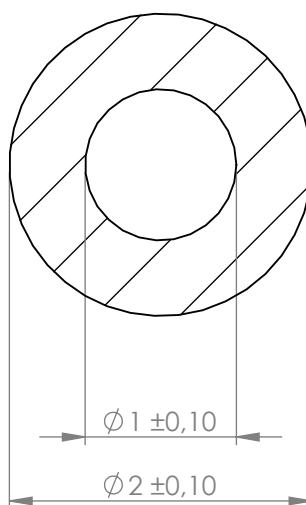


Compashield® splice quality requirements:

No reduction of the shielding properties in the splicing area. Splicing rubber thin and conductive.
 No flash, porosity or excess rubber at the joint after splicing.
 Max increase of compression force in the splicing area 5%. No excess splicing rubber inside hollow profiles.
 Joining point should stand for 10% stretch without mechanical damage

Cross-section area2.36mm ²**Electrial resistance measure:**

Methode: Nolato R3 Max:300 mOhm



REVISIONS			Art.nr	Material	Length	Weight/m	Splice
REV.	DATE	DESCRIPTION	1220500	8642	Roll	5,7g	No
B	140527	Splicing length changed from 342,3 to 338 mm for article 1220501. Customer change article 806073 from rev B to C. //PA	1220501		338 ± 1 mm		Yes
			1220502		338 ± 1 mm		No

		Document name				
		Compashield Hollow O-shape				
Sheet scale	Sheet size	Document no.	Rev no.	Nolato art. no.	Customer no.	
20:1	A4	P2205:14:001	C	1220500		
General tolerances		Drawn by	Checked by	Date		
ISO 3302-1 M3		OE	Pelle Åkerberg	2014-04-02		
Reference cad data				Part version no.		