

1

2

3

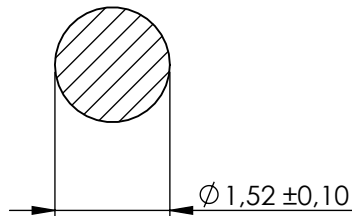
4

**Compashield® splice quality requirements:**

No reduction of the shielding properties in the splicing area. Splicing rubber thin and conductive.  
 No flash, porosity or excess rubber at the joint after splicing.  
 Max increase of compression force in the splicing area 5%. No excess splicing rubber inside hollow profiles.  
 Joining point should stand for 10% stretch without mechanical damage

**Electrial resistance measure:**

Methode: Nolato R3 Max: 150 mOhm  
 Methode: Nolato R7 Max: ---- mOhm

**Cross-section area**

| Art.nr | Material | Lenght | Weight/m | Splice |
|--------|----------|--------|----------|--------|
| 12195  | 8651     | Roll   | 4g       |        |

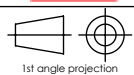
## REVISIONS

| REV. | DATE | DESCRIPTION |
|------|------|-------------|
|      |      |             |



Document name

2195 Compashield O-shape



1st angle projection

Sheet scale  
10:1Sheet size  
A4Document no.  
P2195:14 001Rev no.  
ANolato art. no.  
1219500

Customer no.

General tolerances

ISO 3302-1 M3

Drawn by  
T.Nilsson

Checked by

Date  
2014-03-19

Reference cad data

Part version no.

1

2

3

4