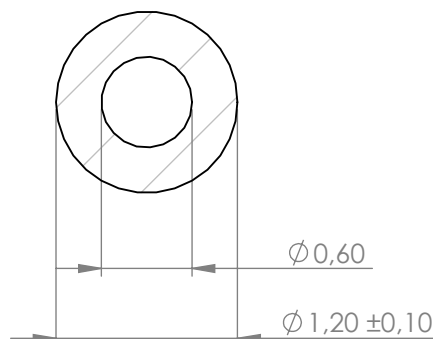


**Compashield® splice quality requirements:**

No reduction of the shielding properties in the splicing area. Splicing rubber thin and conductive.  
 No flash, porosity or excess rubber at the joint after splicing.  
 Max increase of compression force in the splicing area 5%. No excess splicing rubber inside hollow profiles.  
 Joining point should stand for 10% stretch without mechanical damage

**Cross-section area**0.85 mm <sup>2</sup>**Electrial resistance measure:**

Method: Nolato R3 Max :300 mOhm



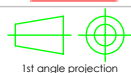
REVISIONS		
REV.	DATE	DESCRIPTION
A	140109	New drawing. //PÅ
B	140110	OD changed 1,15 -->1,2 mm and splicing lenght 34 mm to 38 mm
C	140213	Splicing lenght changed from 38 to 37,5 //OE
D	141008	Tolerance on inner hole follows ISO-standard

Art.nr	Material	Lenght	Weight/m	Splice
1217500	8642	Roll	1,85 g/m	No
1217501		37,5±1 mm		Yes

**Nolato**

Document name

Compashield Hollow O-shape



1st angle projection

Sheet scale  
10:1Sheet size  
A4Document no.  
P2175:14:001Rev no.  
DNalato art. no.  
1217500

Customer no.

General tolerances

Drawn by  
P.Åkerberg

Checked by

Date  
2014-01-09

ISO 3302-1 Class M3

Reference cad data

Part version no.