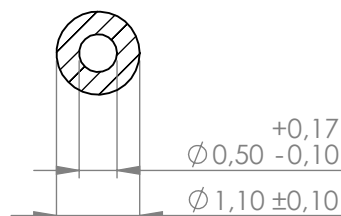
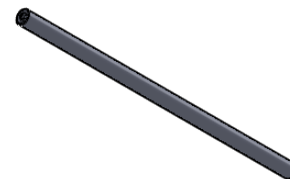


**Compashield® splice quality requirements:**

No reduction of the shielding properties in the splicing area. Splicing rubber thin and conductive.  
 No flash, porosity or excess rubber at the joint after splicing.  
 Max increase of compression force in the splicing area 5%. No excess splicing rubber inside hollow profiles.  
 Joining point should stand for 10% stretch without mechanical damage

**Cross-section area**0,75 mm<sup>2</sup>**Electrial resistance measure:**

Methode: Nolato R3 Max:300 mOhm

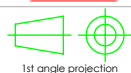


REVISIONS			Art.nr	Material	Length	Weight/m	Splice
REV.	DATE	DESCRIPTION					
A	131010	First drawing. //PÅ	1213100	8642	Roll	1,85 g	No
B	131022	Material changed from 8682 to 8642. //PÅ	1213101		247,6 ±2 mm		Yes
F	141112	Switch of splicing legth / JB / PB	1213102		309,1 ±2 mm		Yes
H	171020	Changed tolerance for innerdiameter from +0,1 to -0,1/+0,17. //PÅ	1213103		776 ±3 mm		Yes

**Nolato**

Document name

Compashield Hollow O-shape



1st angle projection

Sheet scale  
10:1Sheet size  
A4Document no.  
P2131:13:001Rev no.  
HNolato art. no.  
1213100

Customer no.

General tolerances

Drawn by  
P. ÅkerbergChecked by  
P.BrockDate  
2013-10-10

ISO 3302-1 M3

Reference cad data

Part version no.