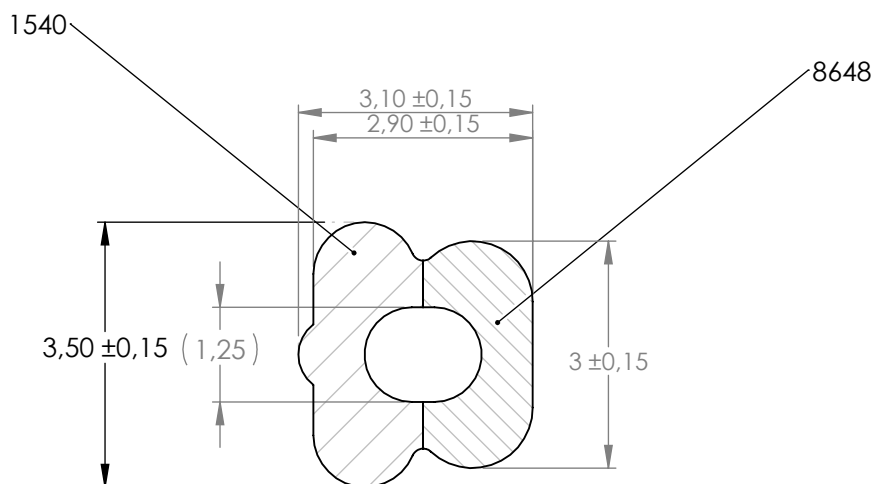


Compashield® splice quality requirements:

No reduction of the shielding properties in the splicing area. Splicing rubber thin and conductive.
 No flash, porosity or excess rubber at the joint after splicing.
 Max increase of compression force in the splicing area 5%. No excess splicing rubber inside hollow profiles.
 Joining point should stand for 10% stretch without mechanical damage

Cross-section area3.41mm ²**Electrial resistance measure:**

Methode: Nolato R3 Max: 300 mOhm

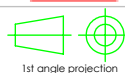


REV.	DATE	DESCRIPTION	Art.nr	Material	Lenght	Weight/m	Splice
REVISIONS			1199300	8648 /1540	Roll	6,5g / 3,6g	No
B	130325	Minor changes	1199301		960 -3/+0		Yes
C	130404	Change heigt from 3 to 3,5mm	1199302		1122 -3/+0		Yes
D	130708	Change Length 1248mm to 1240 Tolerance change from -0/+5 to -3/+0	1199303		1240 -3/+0		Yes

**Nolato**

Document name

Compashield EE



1st angle projection

Sheet scale
10:1Sheet size
A4Document no.
P1993:13:001Rev no.
ENalato art. no.
1199300

Customer no.

General tolerances

Drawn by
T.NilssonChecked by
P.ÅkerbergDate
2013-01-10

ISO 3302-1 Class M3 F

Reference cad data

Part version no.