

**Compashield® splice quality requirements:**

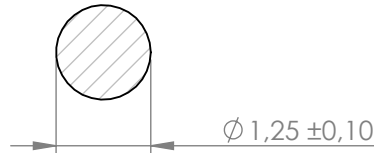
No reduction of the shielding properties in the splicing area. Splicing rubber thin and conductive.  
No flash, porosity or excess rubber at the joint after splicing.  
Max increase of compression force in the splicing area 5%. No excess splicing rubber inside hollow profiles.  
Joining point should stand for 10% stretch without mechanical damage

Cross-section area

1.23mm<sup>2</sup>

**Electrial resistance measure:**

Methode: Nolato R3 Max:150 mOhm



REV. I.		DATE	DESCRIPTION	Art.nr	Material	Lenght	Weight/m	Splice
REVISIONS				1189400	8651	Roll	3g	No
B	130327		Minor changes					
D	150615		Material changed					

		Document name <b>Compashield Solid O-shape</b>						
	Sheet scale <b>10:1</b>	Sheet size <b>A4</b>	Document no. <b>P18940:12:001</b>	Rev no. <b>D</b>	Nalato art. no. <b>1189400</b>	Customer no.		
General tolerances <b>ISO 3302-1 M3</b>			Drawn by <b>T.Nilsson</b>		Checked by		Date <b>2012-04-05</b>	
Reference cad data					Part version no.			