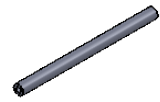
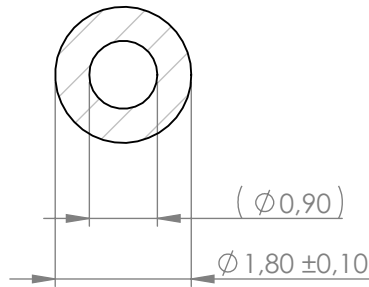


**Compashield® splice quality requirements:**

No reduction of the shielding properties in the splicing area. Splicing rubber thin and conductive.  
 No flash, porosity or excess rubber at the joint after splicing.  
 Max increase of compression force in the splicing area 5%. No excess splicing rubber inside hollow profiles.  
 Joining point should stand for 10% stretch without mechanical damage

**Cross-section area****1,95 mm<sup>2</sup>****Electrial resistance measure:**

Methode: Nolato R3 Max: 300 mOhm



Art.nr	Material	Lenght	Weight/m	Splice
1187900	8642	Roll	5g	No
1187901		228±2 mm		Yes
1187902		510±3 mm		Yes
1187903		558 +5mm		Yes
1187904		303 ±2 mm		Yes
1187905		343 ±2 mm		No
1187906		234 ±2 mm		No
1187907		341 ±2 mm		No
1187908		689 ±3 mm		Yes
1187909		384 ±2 mm		Yes

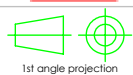
## REVISIONS

REV.	DATE	DESCRIPTION
B	130327	MInor changes
C	131021	New splicing lenghts added. //PÅ
D	131022	New splicing length added
E	160807	New splicing length added. //MH
J	171002	Electric Resistance value increased to 300 mOhm/SM



Document name

Compashield Hollow O-shape



1st angle projection

Sheet scale  
10:1Sheet size  
A4Document no.  
P1879:12:001Rev no.  
KNalato art. no.  
1187900

Customer no.

General tolerances

Drawn by  
T.NilssonChecked by  
S.MuhonenDate  
2012-03-07

ISO 3302-1 M3

Reference cad data

Part version no.