

**Compashield® splice quality requirements:**

No reduction of the shielding properties in the splicing area. Splicing rubber thin and conductive.

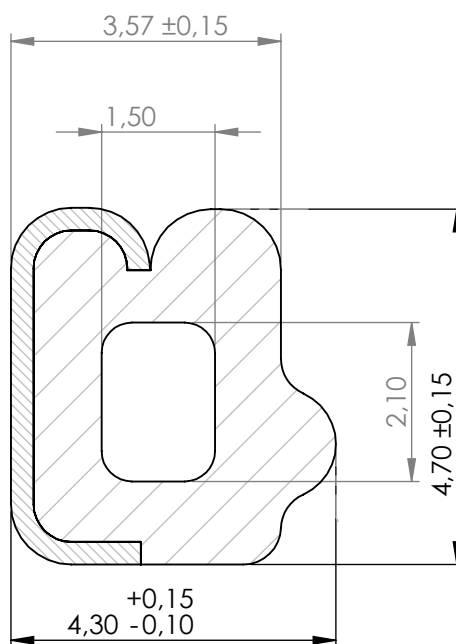
No flash, porosity or excess rubber at the joint after splicing.

Max increase of compression force in the splicing area 5%. No excess splicing rubber inside hollow profiles.

Joining point should stand for 10% stretch without mechanical damage

**Cross-section area**13,95 mm<sup>2</sup>**Electrial resistance measure:**

Methode: Nolato R3 Max:300 mOhm



Art.nr	Material	Lenght	Weight/m	Splice
1180700	8648 /1540	Roll	5,5g/12,5g	No
1180701		1460±5mm		Yes
1180702		320±2mm		Yes
1180303		1450±5mm		Yes
1180704		314±2mm		Yes
1180705		172±1,5mm		Yes
1180706		1057,5±5mm		Yes
1180707		1450 ±5 mm		Yes

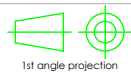
## REVISIONS

REV.	DATE	DESCRIPTION
B	130328	Minor changes



Document name

Compashield EE

Sheet scale  
10:1Sheet size  
A4Document no.  
P1807:11:001Rev no.  
ENolato art. no.  
1180700

Customer no.

General tolerances

Drawn by  
S.MuhonenChecked by  
P.BrockDate  
2011-11-15

ISO 3302-1 M3

Reference cad data

P1807\_Compashield EE 4,7x3,6

Part version no.