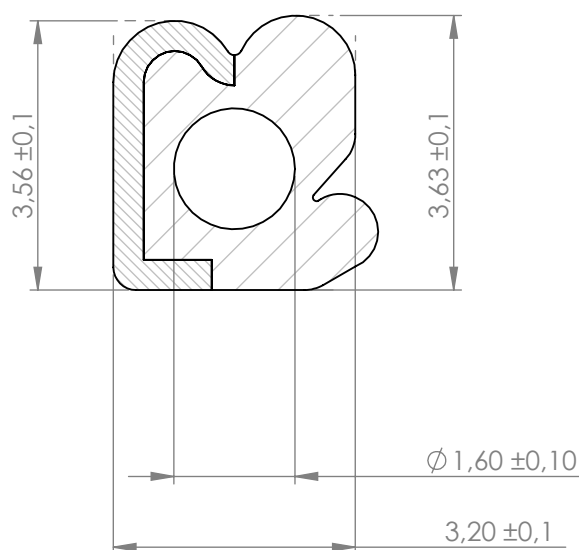


Compashield® splice quality requirements:

No reduction of the shielding properties in the splicing area. Splicing rubber thin and conductive.
 No flash, porosity or excess rubber at the joint after splicing.
 Max increase of compression force in the splicing area 5%. No excess splicing rubber inside hollow profiles.
 Joining point should stand for 10% stretch without mechanical damage

Cross-section area2.21mm²**Electrial resistance measure:**

Methode: Nolato R3 Max:300 mOhm

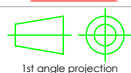


Art.nr	Material	Lenght	Weight/m	Splice
1175000	8648 /1540	Roll	5g / 8g	No
1175001		1446 ±5 mm		Yes
1175002		1275 ±5 mm		Yes
1175003		990 ±2,5 mm		Yes
1175004		1512 ±2,5 mm		Yes
1175005		1497 ±5 mm		Yes
1175006		1758 ±5 mm		Yes
1175007		1052 ±2,5 mm		Yes
1175008		526 +0/-3 mm		Yes
11750009		620,7 ±1 mm		Yes



Document name

Compashield EE



1st angle projection

Sheet scale
10:1Sheet size
A4Document no.
P1750:11:001Version no.
HNalato art. no.
1175000

Customer no.

General tolerances

Drawn by
S.MuhonenChecked by
A.RaskDate
2011-06-17

SS-ISO 2768 m

Reference cad data

Part version no.