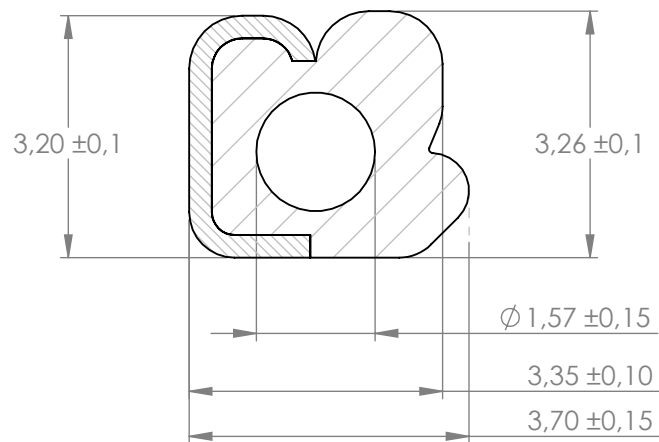


Compashield® splice quality requirements:

No reduction of the shielding properties in the splicing area. Splicing rubber thin and conductive.
 No flash, porosity or excess rubber at the joint after splicing.
 Max increase of compression force in the splicing area 5%. No excess splicing rubber inside hollow profiles.
 Joining point should stand for 10% stretch without mechanical damage

**Cross section area
 conductive material**
1.95mm ^{^2}**Electrial resistance measure:**

Methode: Nolato R3
 Max: 300 mOhm



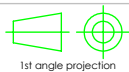
Art.nr	Material	Lenght	Weight/m	Splice
1173900	1540/8648	Roll	7,5g / 4,5g	No
1173901		960 ±5		Yes
1173902		1480 ±5		Yes
1173903		1770 ±5		Yes
1173904		1840±5		Yes
1173905		1403 ±5		Yes
1173906		1436 ±5		Yes
1173907		1582±5		Yes
1173908		2160±5		Yes



Nolato

Document name

Compashield EE


 Sheet scale
 10:1

 Sheet size
 A4

 Document no.
 P1739:11:005

 Version no.
 F

 Nalato art. no.
 1173900

Customer no.

General tolerances

 Drawn by
 T.Nilsson

 Checked by
 S.Muhonen

 Date
 2012-03-13

SS-ISO 2768 m

Reference cad data

Part version no.