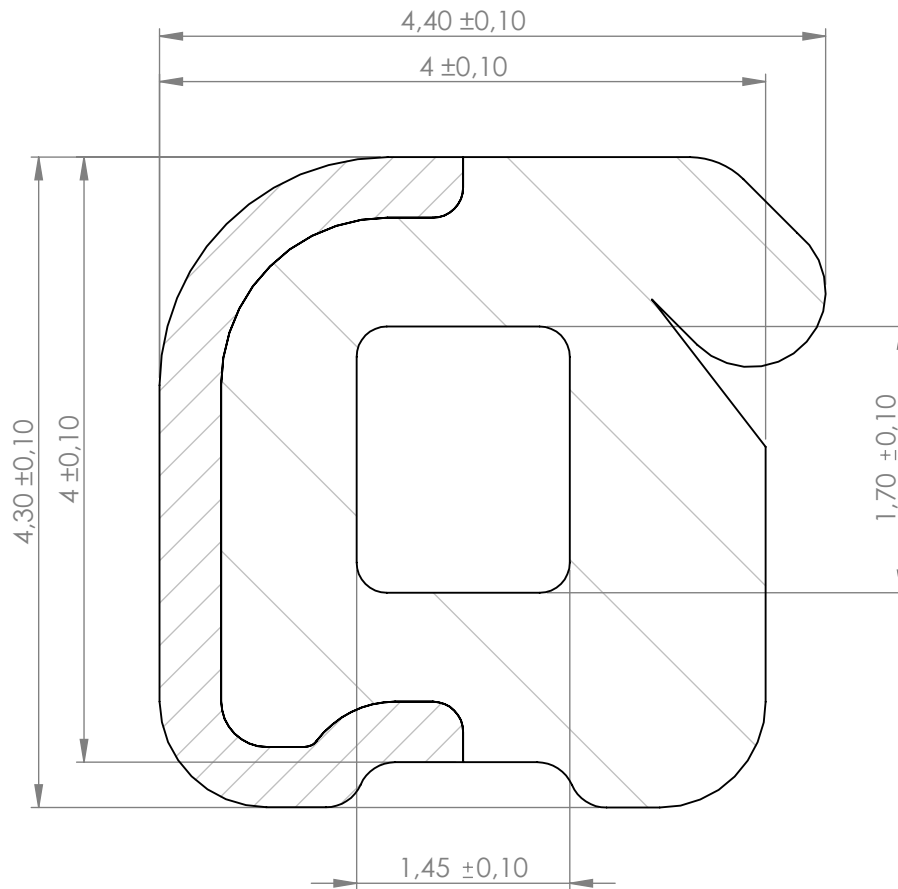


Compashield® splice quality requirements:

No reduction of the shielding properties in the splicing area. Splicing rubber thin and conductive.
 No flash, porosity or excess rubber at the joint after splicing.
 Max increase of compression force in the splicing area 5%. No excess splicing rubber inside hollow profiles.
 Joining point should stand for 10% stretch without mechanical damage


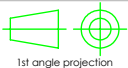
Cross-section area2,74mm²**Electrical resistance measure:**

Methode: Nolato R3 Max:300 mOhm



Art.nr	Material	Lenght	Weight/m	Splice
1166800	8648/1540	Roll	6,6g/12,2g	No
1166801	8648/1540	1540±5		Yes
1166802	8648/1540	1582±5		Yes
1166803	8648/1540	895±5		Yes
1166804	8648/1540	730±3mm		Yes

REVISIONS		
REV.	DATE	DESCRIPTION
C	130619	Minor changes

		Document name			Compashield EE		
		Sheet scale	Sheet size	Document no.	Rev no.	Nalato art. no.	Customer no.
		20:1	A4	P1668:11:001	F	1166800	
General tolerances				Drawn by	Checked by	Date	
ISO 3302-1 M3				S.Muhonen	P.Akerberg	2011-04-19	
Reference cad data						Part version no.	