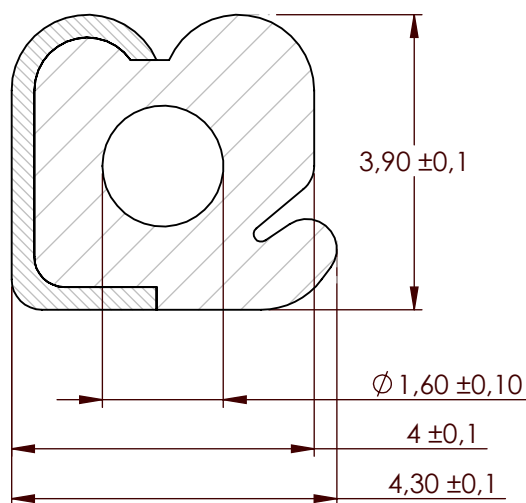


**Compashield® splice quality requirements:**

No reduction of the shielding properties in the splicing area. Splicing rubber thin and conductive.  
 No flash, porosity or excess rubber at the joint after splicing.  
 Max increase of compression force in the splicing area 5%. No excess splicing rubber inside hollow profiles.  
 Joining point should stand for 10% stretch without mechanical damage

**Conductive  
Cross-section area**12.6 mm<sup>2</sup>**Electrial resistance measure:**

Methode: Nolato R3 Max: 300 mOhm

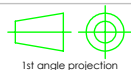


Art.nr	Material	Lenght	Weight/m	Splice
1163600	1540/8648	Roll	13g / 4,5g	No
1163601	1540/8648	453 ± 2 mm		Yes
1163602	1540/8648	1522 ± 5 mm		Yes
1163603	1540/8648	1537 ± 5 mm		Yes
1163604	1540/8648	1530 ± 5 mm		Yes
1163605	1540/8648	1077 ± 5 mm		Yes
1163606	1540/8648	169 ± 2 mm		Yes
1163607	1540/8648	1074 ± 5 mm		Yes
1163608	1540/8648	166 ± 2 mm		Yes
1163609	1540/8648	165 ± 2 mm		Yes
1163610	1540/8648	928 ± 2 mm		Yes
1163611	1540/8648	228 ± 2 mm		Yes

**Nolato**

Document name

Compashield EE



1st angle projection

Sheet scale  
10:1Sheet size  
A4Document no.  
P1636:12:002Version no.  
HNalato art. no.  
1163600

Customer no.

General tolerances

Drawn by  
T.NilssonChecked by  
P.BrockDate  
2012-03-12

ISO 3302-1 Class M3

Reference cad data

Tool Nr:

1636