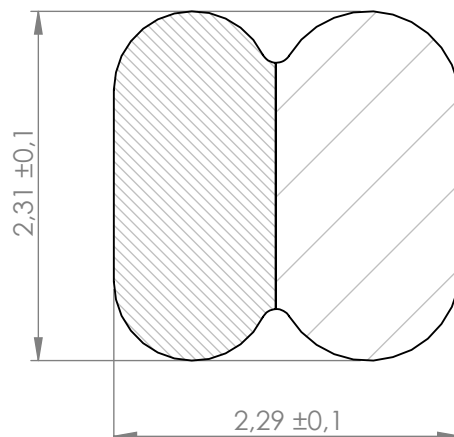


Compashield® splice quality requirements:

No reduction of the shielding properties in the splicing area. Splicing rubber thin and conductive.
 No flash, porosity or excess rubber at the joint after splicing.
 Max increase of compression force in the splicing area 5%. No excess splicing rubber inside hollow profiles.
 Joining point should stand for 10% stretch without mechanical damage

Cross-section area4.74 mm²**Electrial resistance measure:**

Methode: Nolato R3 Max:300 mOhm



Art.nr	Material	Lenght	Weight/m	Splice
1157500	8648/1540	Roll	5g/3g	No
1157501	8648/1540	126 ±1		Yes
1157502	8648/1540	168 ±1		Yes
1157503	8648/1540	1037 ±1		Yes
1157504	8648/1540	1054,5 ±1		Yes
1157505	8648/1540	947 ±2		Yes
1157506	8648/1540	154,5 ±1		Yes
1157507	8648/1540	650 ±2		Yes
11575008	8648/1540	637 ±2		Yes
1157509	8648/1540	528 ±1		Yes
1157510	8648/1540	947 ±1		Yes
1157511	8648/1540	375,2		Yes

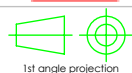
REVISIONS

REV.	DATE	DESCRIPTION



Document name

Compashield EE



1st angle projection

Sheet scale
20:1Sheet size
A4Document no.
P1575:10:002Rev no.
DNolato art. no.
1157500

Customer no.

General tolerances

Drawn by
S.MuhonenChecked by
P.BrockDate
2010-01-14

ISO 3302-1 Class M3

Reference cad data

Part version no.