

Compashield® splice quality requirements:

No reduction of the shielding properties in the splicing area. Splicing rubber thin and conductive.
 No flash, porosity or excess rubber at the joint after splicing.
 Max increase of compression force in the splicing area 5%. No excess splicing rubber inside hollow profiles.
 Joining point should stand for 10% stretch without mechanical damage

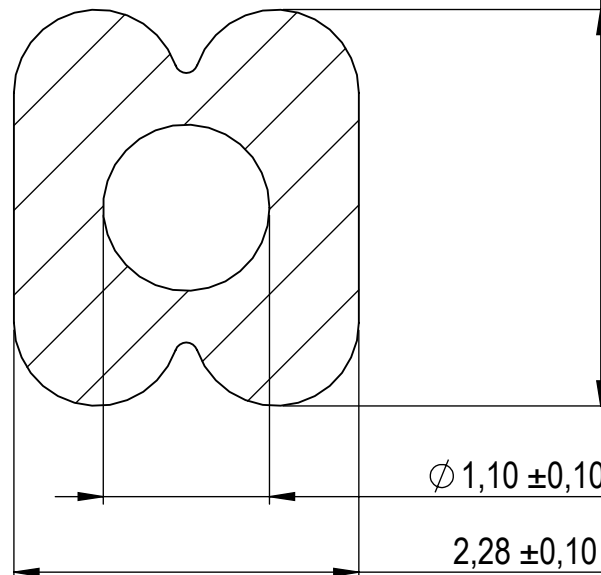
Cross-section area
5,4 mm ²

Electrial resistance measure:

Methode: Nolato R3 Max: N/A



2,62 ±0,10



Ø 1,10 ±0,10

2,28 ±0,10

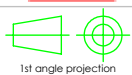
E

REVISIONS			Art.nr	Material	Length	Weight/m	Splice
REV.	DATE	DESCRIPTION	1285000	1540	Roll	5 gram	No
PB	2017-03-01	Profile and length -01 changed	1285001		783 ±3 mm		Yes
			1285002		590 ±5 mm		Yes
			1285003		790,3 ±5mm		Yes



Document name

Compashield Special Profile IP

Sheet scale
20:1Sheet size
A4Document no.
P2850_17_101Rev no.
ENalato art. no.
1285000

General tolerances

Drawn by
S.MChecked by
P.ÅDate
2017-02-24

SS ISO 3302-1 M3

Reference cad data
1285000