

Compashield® splice quality requirements:

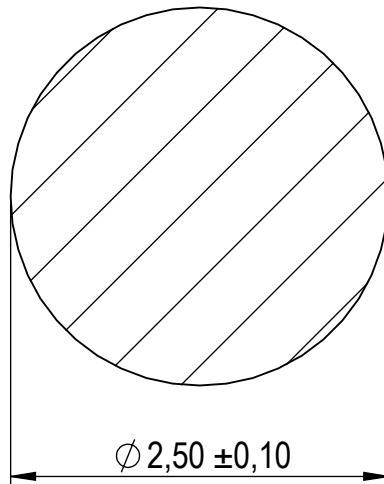
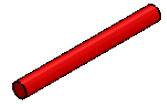
No reduction of the shielding properties in the splicing area. Splicing rubber thin and conductive.
No flash, porosity or excess rubber at the joint after splicing.
Max increase of compression force in the splicing area 5%. No excess splicing rubber inside hollow profiles.
Joining point should stand for 10% stretch without mechanical damage

Cross-section area

4,9 mm²

Electrial resistance measure:


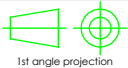
Methode: Nolato R3 Max: N/A



Nolato Silikonteknik

Art.nr	Material	Length	Weight/m	Splice
1269900	1540	Roll	5,4g	No
1269901		310 ±3 mm		Yes
1269902		361 ±3 mm		Yes
1269903		565 ±3 mm		Yes

REVISIONS		
REV.	DATE	DESCRIPTION

	Document name		Compashield Solid O-shape		
	Sheet scale	Sheet size	Document no.	Rev no.	Nolato art. no.
	20:1	A4	P2699:16:001	A	1269900

General tolerances	Drawn by	Checked by	Date
	O.E	P.Å	2015-08-23
Reference cad data			
1269900 A Compashield Solid O-shape			

SS ISO 3302-1 M3