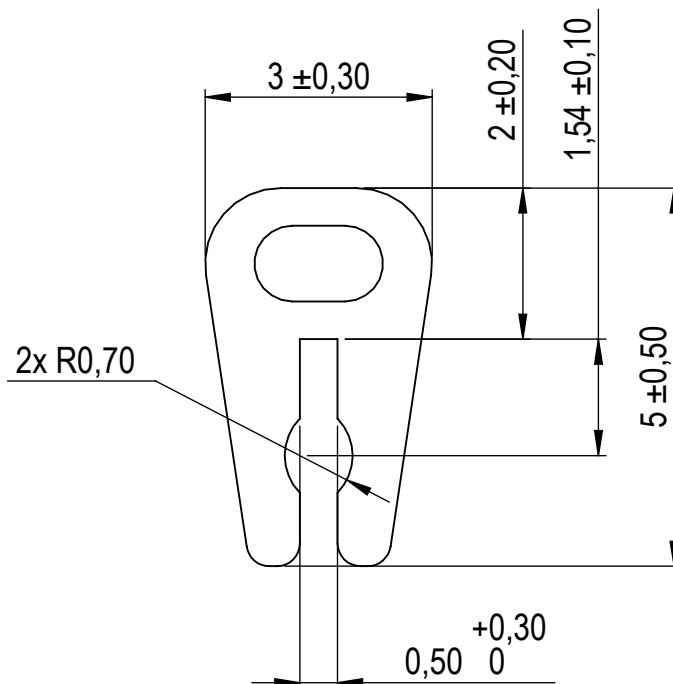
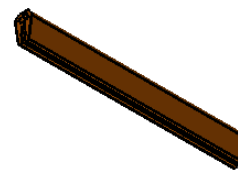


Compashield® splice quality requirements:

No reduction of the shielding properties in the splicing area. Splicing rubber thin and conductive.
 No flash, porosity or excess rubber at the joint after splicing.
 Max increase of compression force in the splicing area 5%. No excess splicing rubber inside hollow profiles.
 Joining point should stand for 10% stretch without mechanical damage

**Cross-section
area**8,7 mm²**Electrial resistance measure:**

Methode: Nolato R3 Max: 300 mOhm



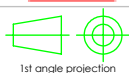
REVISIONS

REV.	DATE	DESCRIPTION	Art.nr	Material	Length	Weight/m	Splice
A	150410	First revision sent to customer for review. //PA	1241500	8642	Roll	21,5	No
B	150413	Changed according to comments from customer. Weight added.//PA	1241501		9 ± 1 mm		

**Nolato**

Document name

CompaShield U-shape



1st angle projection

Sheet scale

10:1

Sheet size

A4

Document no.

2415:15:001

Rev no.

B

Nalato art. no.

1241500

General tolerances

SS ISO 3302-1 M3

Drawn by

P.Åkerberg

Checked by

O.Edholm

Date

2015-03-05

Reference cad data

1241500 B CompaShield U-shape